

# AUDIO REQUEST

## ARQPOCKET

Pocket PC Interface



Version: 2.0 – Requires AudioReQuest Software Version 1.9.0 or later.  
Last Modified:  
2/15/04 –New ARQPocket 2.0 Version

# USER MANUAL

**REQUEST**  
MULTIMEDIA

## Overview:

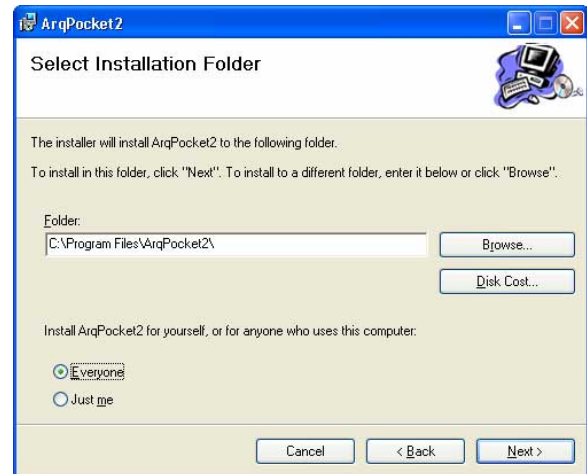
ARQPocket extends the user interface of the AudioReQuest to a wireless PocketPC.

## ARQPocket 2.0 Requirements:

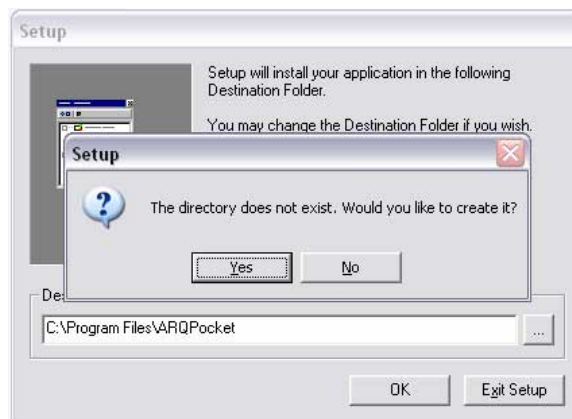
- Pocket PC with XScale, ARM, MIPS, SH3 processors running Pocket PC 2003, 2002, or 2000
- Latest .Net Compact Framework (Available with ARQPocket download).
- Network Connection (Ethernet or Wireless Compact Flash Card, SDIO card, or Built-In)
- Wireless Access Point (For Wireless)
- Networked AudioReQuest running **Software version 1.9.0** or later. (For assistance in setting up your AudioReQuest on a network, please see AudioReQuest Network Guide 1: Ethernet Networking)
- Windows PC with ActiveSync 3.7.1 or later (for installation)

## Installation:

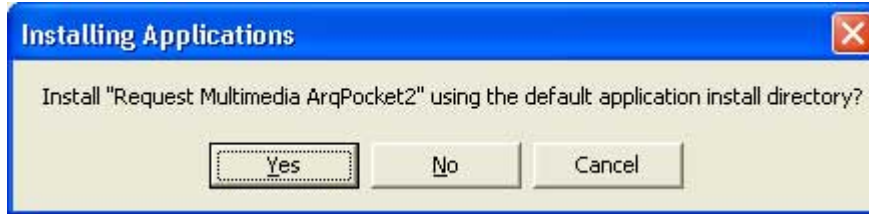
1. Connect your Pocket PC to your Windows PC to enable ActiveSync 3.7.1 or later.
2. Download and install the Latest .Net Compact Framework from Microsoft, link available at ARQPocket download page at [www.request.com](http://www.request.com).
3. Download and install ARQPocket2 from [www.request.com](http://www.request.com).
4. Choose a folder on the PC to install. Click OK to accept the default location (recommended).



5. If asked to create a new directory, click Yes.



6. Choose where to install ARQPocket on the Pocket PC. Default is recommended.



7. The Setup program will finish with the following message:



## To Run ARQPocket:

1. Grab your Pocket PC and make sure the wireless LAN is running and working.
2. Click Start, the Programs.
3. Click on the ARQPocket icon.



## Connecting to AudioReQuest:

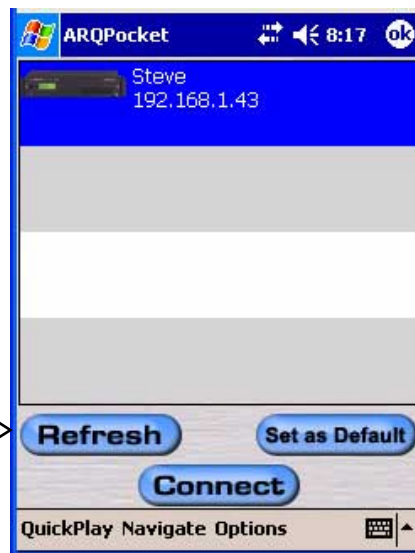
ARQPocket automatically finds all the AudioReQuest units on your local network and displays them in a list. You can hit "Refresh" to rescan for units. If you only have one unit, you can "Set as Default" to automatically connect to that unit every time ARQPocket is loaded. You can connect to a unit on the list by clicking on a unit and then press "Connect" or just double click on a unit.

Once connected, you can go back to the Connection screen by clicking OK on the top right corner of the program to select other units in **Multi-Zone** systems.

**Note:** ARQPocket will only connect to AudioReQuest units with Software version 1.9.0 or higher. Please be sure all of your AudioReQuest units are up to date.



Refreshes ARQFind Lookup



Auto connects to unit on start-up

## Using ARQPocket:

There are two main screens for ARQPocket: Player and Navigator Screen which matches the same screens on the AudioReQuest.



## Player Screen:

**Progress Bar**  
Slide to any Part of the Song.

**Click AlbumArt for Larger View**

**Transport Controls**

**Song Information**  
Click on any field to jump to that item in Navigator View

**Browse for Music**  
Switch to Navigator View

ARQPocket 6:27

01:12 / 03:44

Song: So Good

Artist: Sirsy

Album: Baggage

Playlist: Baggage

Next: IOU

Random! Browse for Music

QuickPlay Navigate Options

Note: Volume is only available if Volume Lock is disabled on the AudioReQuest.

ARQ Volume

Playlist: Baggage

Next: Let Go

Random! Browse for Music

Mute

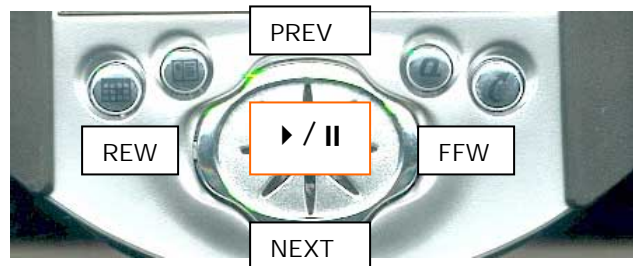
QuickPlay Navigate Options

## QuickPlay Menu

- Next Track
- Prev Track
- Next Playlist
- Prev Playlist
- Next Genre
- Prev Genre
- Next Artist
- Prev Artist
- Next Album
- Prev Album
- Random!

QuickPlay Navigate Options

## Player Hard Button Controls



## Navigator Screen:

**Home:** Top of Navigator

**Find:** Search by Name  
See below.

**Navigator List**  
Click Once to Select,  
Click Again to Enter  
or Play.

**Play** Selected Item or  
Queue to Now Playing

**AlbumArt =**  
Play Now

**Page**  
Up/Down

**Back (Left)**

**Clear or**  
**View Queue**

**Player View**

## Find Screen

Starts with:  **Artists**

Best Match:

A B C D E F

G H I J K L

M N O P Q R

S T U V W X

Y Z Space BackSpace

Next Match Restart Search EXIT

QuickPlay Navigate Options

Use keyboard to search by first letter.

Andrew Mogrelia

123 1 2 3 4 5 6 7 8 9 0 - =

Tab q w e r t y u i o p [ ]

CAP a s d f g h j k l ; ' /

Shift z x c v b n m , . /

Ctl á ü ` \ |

QuickPlay Navigate Options

## Navigate Menu

Dry

So Good

IOU

**Home**

**All Songs**

**Artists**

**Albums**

**Genres**

**View Now Playing**

**Playlists**

**Play Now**

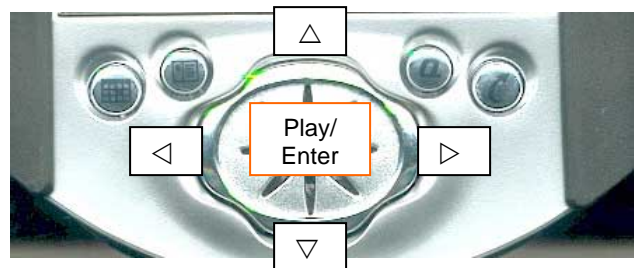
**Clear**

**View**

**Player**

QuickPlay Navigate Options

## Navigator Hard Button Controls



## Options Menu



## ARQMenu



## Troubleshooting:

1. **I cannot connect to the AudioReQuest, it gives a Fail to Connect error.**
  - 1.1. Make sure your Wireless card is fully in and you are within range of an access point.
  - 1.2. Make sure the PocketPC is off the cradle.
  - 1.3. Connect to a website like yahoo.com with Pocket Internet Explorer to make sure your network connection is on. If not check your network settings as recommended by your network card manufacturer.
  - 1.4. Check the IP address of the AudioReQuest and make sure the AudioReQuest is properly connected to the network.
2. **I turn off the power of the Pocket PC or it goes to sleep, and when I turn it on again, Pocket PC doesn't respond.**
  - 2.1. Press any command like volume up. Within 2-30 seconds, ARQPocket should recover.
  - 2.2. Make sure you are in range.
  - 2.3. If it does not recover, try hitting the 'OK' on the upper right hand of the application to close the Player or Navigator window. You should see the connection window. Try hitting Connect.
  - 2.4. Try taking out the network card and putting it back in.
  - 2.5. Try exiting the application completely, and reloading ARQPocket.
  - 2.6. When all else fails, press the "Reset" hard button on the Pocket PC and reload ARQPocket.
3. **Will you be able to...**
  - 3.1. We will be adding addition features down the line. To make suggestions, please go to [www.request.com/support](http://www.request.com/support) and click on the Message board to make suggestions.