

Sony Blu-ray Disc Megachanger

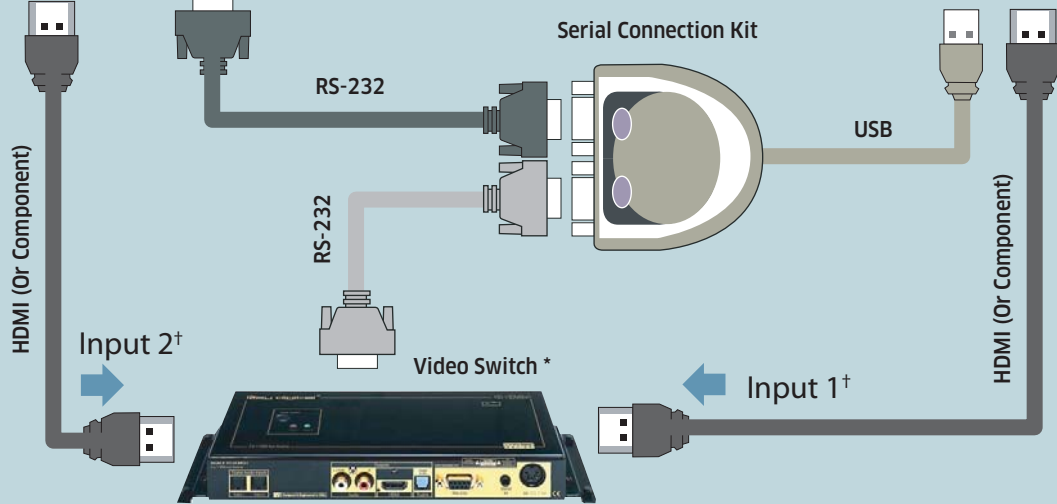


IMPORTANT

- Enable **RS232 Control** for the Sony before configuration
- Update Server Software to 6.2.1
- Update IMC Firmware to 1.2
- Power down all equipment **before connecting wires**

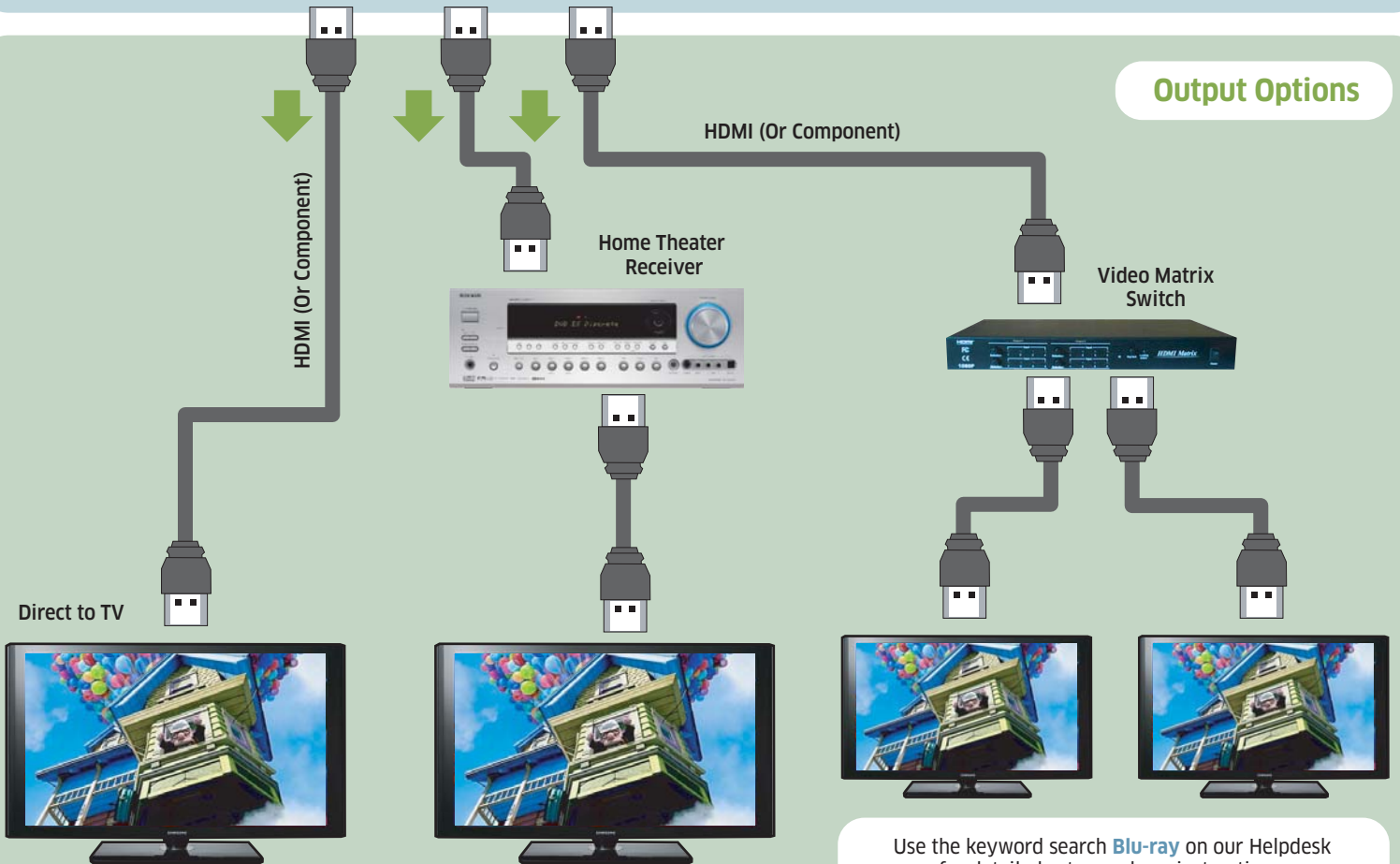
Input Configuration

IMC Intelligent Media Client



* HDMI and Component Video Switches Available
† Inputs above 1 and 2 are not currently used.

Output Options



Use the keyword search **Blu-ray** on our Helpdesk for detailed setup and use instructions:
www.ReQuest.com/support